



SMART KEY

# CYBERKEY GO

Part number: CKR-GO



**Designed for a mobile workforce with Bluetooth® technology and replaceable battery.**

- Replaceable 3 Volt Lithium CR2 Battery
- 2MB Flash Memory Stores up to 12,000 Audit Events
- Fully compatible with all Gen 2 CyberLock Features



## Improve Productivity

Update access permissions anywhere with a Bluetooth-enabled phone or device.



## Ultimate Convenience

Replace the battery on the go. No need to worry about how much charge is left in the key.



## Greater Accountability

Individually manage fully customizable permission schedules and record access attempts and audit trails.





## CyberKey Go

Part number: CKR-GO

CAW	Version 9.6 or newer
Enterprise	<input checked="" type="checkbox"/>
Basic	<input type="checkbox"/>

The CyberKey Go is an electronic key used to operate CyberLock cylinders. It has memory that contains encrypted access codes, a list of accessible locks, schedules of authorised dates and times, and a begin-end date range during which the key will operate. The battery from a CyberKey energizes the electronics within a CyberLock cylinder.

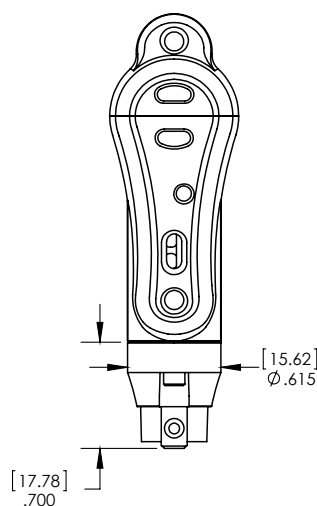
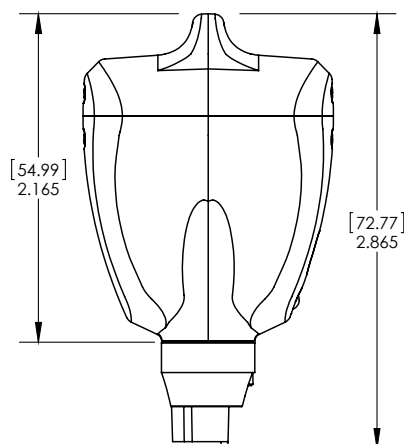
CyberKey Go has a replaceable battery and is fully compatible with all Gen 2 CyberLock features.

Bluetooth 5.0 allows users to update access permissions on the go using an Android or iOS app.



## Specifications

<b>Physical</b>	Fiberglass-reinforced nylon, replaceable brass tip
<b>Operating Temperature</b>	32° to 122° F (0° to 50° C)
<b>Weight</b>	1.5 oz (43.1 g)
<b>Communications</b>	Infrared, Bluetooth 5.0
<b>Visual Output</b>	Multicolor LED
<b>Sound Output</b>	Embedded speaker
<b>Power</b>	3V lithium CR2 battery, field replaceable
<b>Memory</b>	2 MB for up to 12,000 audit trail events and up to 12,000 locks with Lock List expansion SEM
<b>Compatibility</b>	Generation 2 communicators such as the ValidiKey 2 Plus and ValidiKey 20, USB Station with CyberLink 2, IR Encoder 10, CyberKey Web Authoriser Hub 2, and Flex II with a keyport.
<b>RoHS</b>	Compliant with EU 2015/863
<b>Remote Updates</b>	Update the key using the CyberAudit Link mobile app anywhere there is Internet access
<b>Activation/Deactivation</b>	Via the mobile app, with or without Internet access



Notes:  
Dimensions in inches (mm)  
Drawing not to scale

