

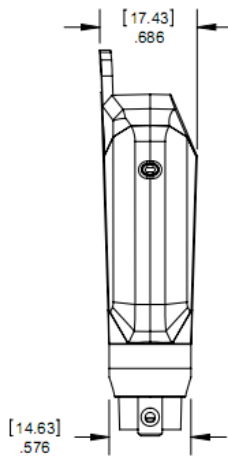
Cyberkey, Rechargeable, Extra Durable

Part numbers: CK-RXD, CK-DKR

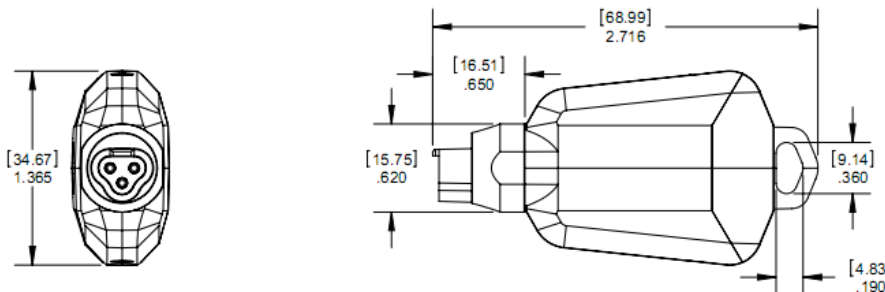
The Extra Durable Rechargeable CyberKey is an electronic key that is used to operate CyberLocks. It has a brass tip with stainless steel contact pins. The case is made of fibreglass-reinforced nylon, and the battery cap is Polycarbonate. Indicator lights show battery power and key activation.

The CyberKey has memory that contains an encrypted access code, a list of locks it may access, schedules of dates and times for accessing locks, and a begin/end date range during which the key will operate. A CyberKey also contains an audit trail of up to 3,900 access events. Each time the key touches a CyberLock, it records the lock ID, date, time, and authorisation status.

The CK-RXD key communicates to the software either through the tip when placed in a communication station, or by making an infrared connection to an IR device. The battery can also be recharged when placed in a recharging station or any communication device that also acts as a CyberKey recharging station.



Notes:
 Dimensions in inches (mm)
 Drawing not to scale
 Ø indicates diameter



Battery Usage for CK-RXD

The CK-RXD CyberKey uses a Lithium ion polymer battery, the same that is found in many small portable electronic devices such as iPods and cell phones. This battery was chosen for use in the rechargeable CyberKey due to its size, reliability, quick charging, and overall performance.

Operating temperatures for electronic devices such as the CK-RXD are largely determined by the battery used to power the device. Several factors contribute to the overall picture of battery performance in the CyberKey: the temperature at which the key is stored, the temperature at which it is used, and the temperature at which it is charged.

There are significant differences between a key that is kept close to the user, i.e. in a pocket, and a key that is stored in the glove box of a vehicle and therefore exposed to extreme cold or extreme heat. Care should be taken by users to properly manage key usage in extreme temperatures.

CK-RXD Battery Facts:

- The CK-RXD key is shipped with a partial charge and should be fully charged before putting the key into service.
- Use only a CyberLock charging device to charge the key.
- The key can be left in the charging device when fully charged; a full battery will automatically stop the charging current.
- Lithium ion polymer batteries prefer partial discharging and frequent recharging as opposed to discharging to empty and recharging to full.



Specifications

Ideal operating temperature:	0° to 45°C
Maximum recommended operating temperature:	-10°C to 50°C
Charging temperature:	5°C to 45°C
Charging time:	2 hours for fully depleted battery
Battery Life:	300 to 500 full charge/discharge cycles
Low battery indication:	Key red LED flashed once every 8 seconds
Battery charge level:	Battery capacity is measured and can be viewed each time key communicates with CyberAudit software; Professional and Enterprise software allow email notification of low battery status.
Key memory power requirement:	Memory is non- volatile; all information stored in key memory is retained regardless of the state of the battery; complete depletion of battery may require reprogramming key to restart clock.