

CL-570 Greasing Instructions

After wiping off old grease with a clean, soft cloth, use a foam-tipped applicator to apply a thin film of fresh grease (fully coating the surface, but thin enough to see through) from just behind the Ball Bearing hole to the Snap Ring groove, as shown in Figure 1. Do not apply grease to the Ball Bearing hole.

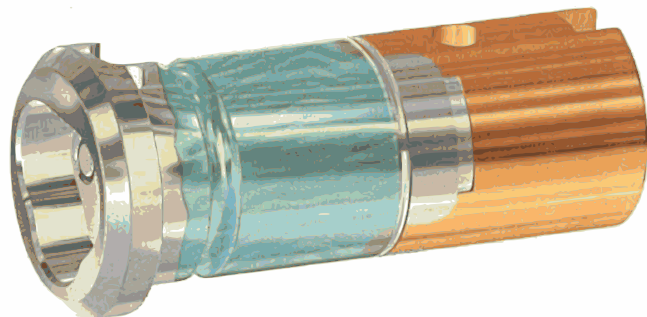


Figure 1: Apply Thin Film to Core Assembly

Remove old grease from the bore and Lock Pin divot of Shell. Apply a thin layer of fresh grease (as thin as possible, but not thin enough to see through) to the Lock Pin divot using a foam-tipped applicator. See Figure 2.

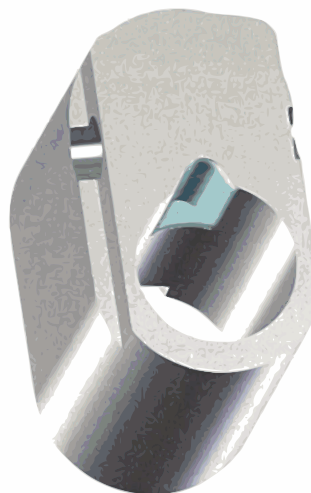


Figure 2: Apply Thin Layer to Lock Pin Divot