

# Padlock Cleaning Instructions

**PL-0\***



## Disassembly Instructions

1. Open padlock and move shackle aside.
2. Unscrew the retaining screw inside the shackle hole.
3. Remove the CL-6P3WRP cylinder assembly. Maintain configuration of assembly pieces.
4. Remove locking cam and ball bearings from inside the lock.
5. Pull the shackle out of the lock body.
6. Clean all internal parts by wiping them down with a clean cloth or paper towel. **DO NOT** apply solvents, lubricants, or other cleaners on any padlock components! (e.g. WD-40)

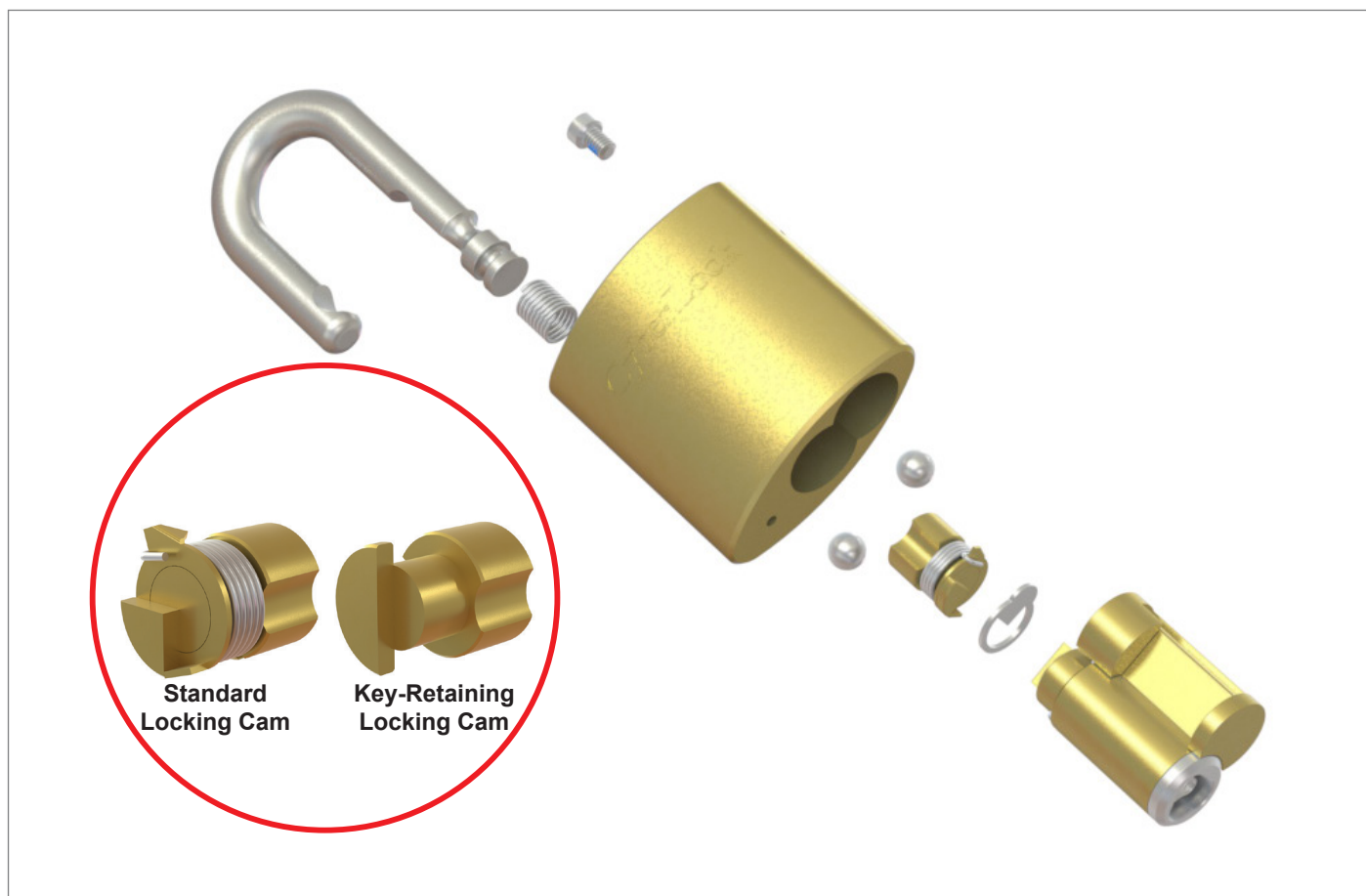


Figure 1: Disassemble Lock Components

## Lubrication Instructions

7. Apply an NLGI Grade 2 grease (such as G&G Oil Company of Indiana FG Grease EP 2) to both ball bearings. Cover the ball bearings completely with the grease. See Figure 2.
8. Apply a dry film PTFE fluoropolymer lubricant (such as Shamrock SST-4) to the locking cam. Cover the locking cam completely with the dry film lubricant. Allow the film to dry after application. See Figure 3.

*Note: Do not apply any of the above lubricants to the CyberLock cylinder! Also, do not apply powdered graphite to any components of the padlock!*

*Note: Refer to the CyberLock Cylinder Cleaning Instructions for cylinder maintenance procedures.*



Figure 2: Lubricate Ball Bearings

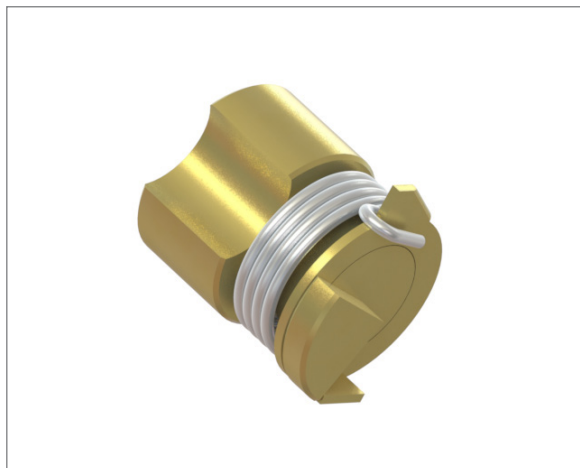


Figure 3: Lubricate Locking Cam

## Re-assembly Instructions

9. Install the shackle spring and shackle into the padlock body in the closed position. See Figure 4.
10. Insert the ball bearings, then install the locking cam back into the padlock body to retain the shackle. See Figure 4.



Figure 4: Install BBs and Locking Cam

*When correctly seated, the ball bearings and locking cam should fit inside the padlock body as shown in Figure 5.*



Figure 5: Proper Seating of Components

11. Install the rotation-limiting washer onto the back of the lock cylinder so that the round tab faces the retaining screw hole of the retainer. See Figure 6.



Figure 6: Install Washer onto Cylinder

## Re-assembly Instructions

12. Position cylinder assembly in padlock body, then open cylinder with a CyberKey and rotate slightly, pushing assembly in until fully seated. See Figure 7.

**DO NOT INSTALL RETAINER SCREW UNTIL AFTER TESTING IN STEP 13!**

13. Hold cylinder assembly in place, then close shackle. Open and test lock operation three times. If working properly, open lock and install retainer screw. If operation is not smooth, remove and check assembled parts.



*Figure 7: Install Cylinder*



*Cleaned & Re-assembled Padlock*